

Nordic Ski Club of Fairbanks
PO Box 80111
Fairbanks, AK 99708
 NSCF Office: 907-474-4242
 NSCF Office Fax: 907-474-4242
 Birch Hill Weather: 907-457-4837
 Race Hotline: 907-457-4434
 Timing Building Fax: 907-457-4435
 e-mail: nordic@ptialaska.net
 web: www.nscfairbanks.net

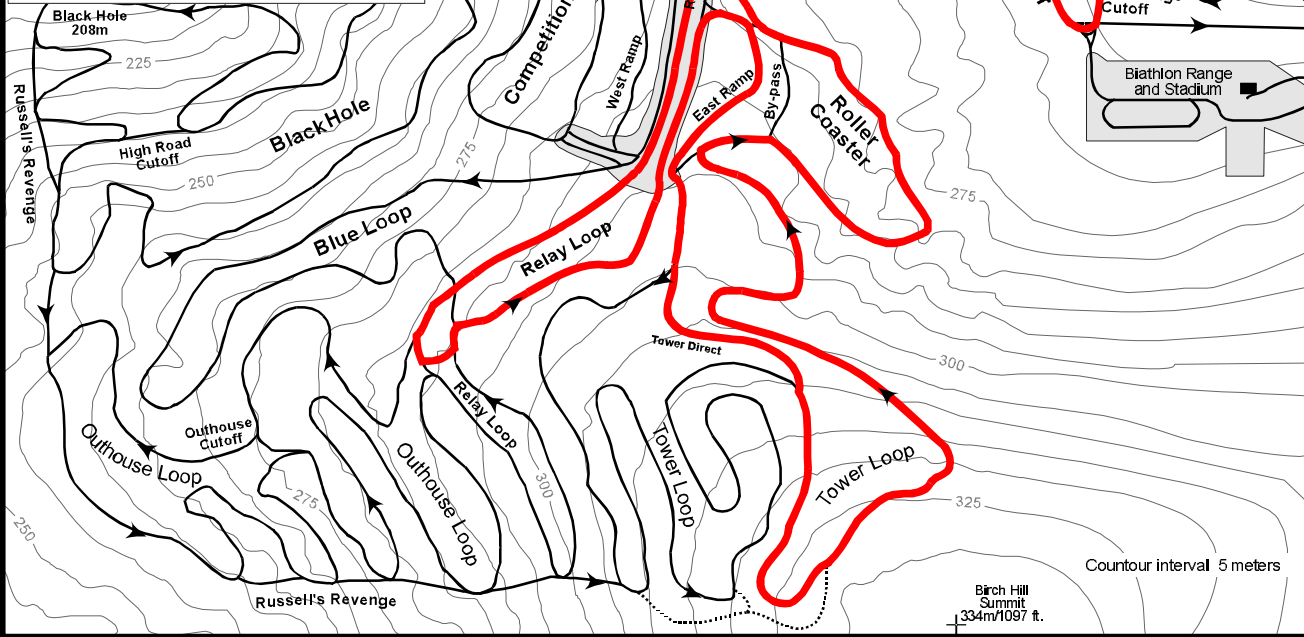
**NORDIC
 SKI CLUB**



FAIRBANKS

Cross Country Alaska JO Qualifying Series #6 Besh Cup Finals

Sunday, February 8, 2004
Organized by NSC Fairbanks
Jim Whisenant Ski Trails
Birch Hill Park Rec. Area, Fairbanks, Alaska



J3 & J2 Boys & Girls
5km Free Technique
Mass-Start
Red Course

Technical Information:

Measured Length: 4906m
 Height Difference (HD): 73m
 Total Climb (TC): 155m
 Maximum Climb (MC): 42m
 Climb per Km: 33.1 m/km

Competition Committee:

Technical Delegate:
 Chief of Competition: John Estle
 Ass't Chief of Competition: Greg Whisenant
 Chief of Secretariat: Rikke Mery
 Chief of Course: Russ Lizotte
 Assistant Chief of Course: Tom Helmers
 Chief of Stadium: Susan Faulkner
 Chief of Timing: Terry Schmidt
 Chief of Competition Control: John Carlson

0 100 200 meters

J. Marcotte
 Map updated Oct. 1999