

Nordic Ski Club of Fairbanks
PO Box 80111

Fairbanks, AK 99708

NSCF Office: 907-474-4242

NSCF Office Fax: 907-474-4242

Birch Hill Weather: 907-457-4837

Race Hotline: 907-457-4434

Timing Building Fax: 907-457-4435

e-mail: nordic@ptialaska.net

web: www.nscfairbanks.net

**NORDIC
 SKI CLUB**



FAIRBANKS

Cross Country Alaska JO Qualifying Series #6 Besh Cup Finals

Sunday, February 8, 2004

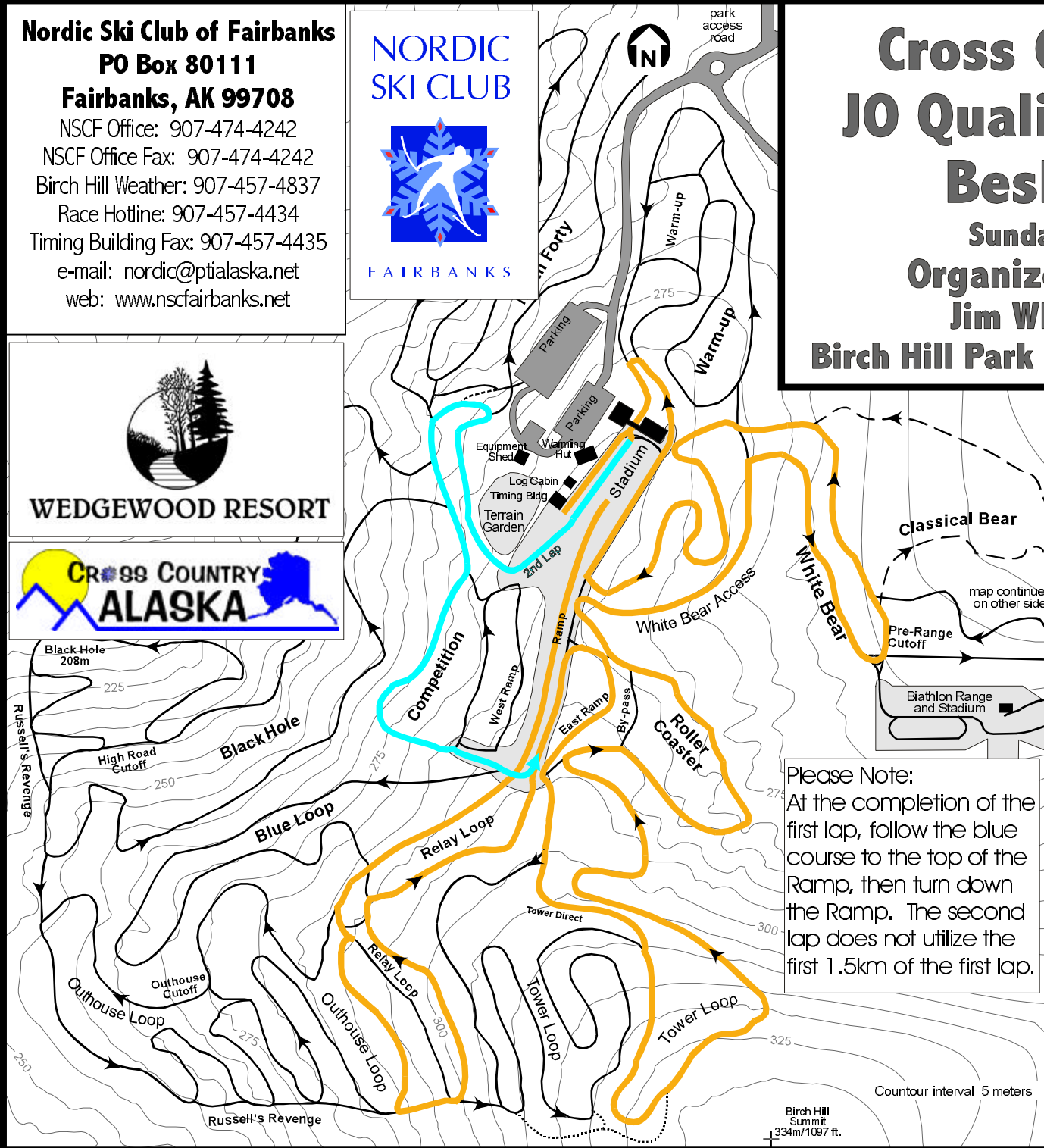
Organized by NSC Fairbanks

Jim Whisenant Ski Trails

Birch Hill Park Rec. Area, Fairbanks, Alaska



WEDGEWOOD RESORT



**J1 & Older M&F 10km
 Free Technique, Mass-Start
 Gold Course
 (2nd Lap Starts with Blue)**

Technical Information:

Measured Length: 10294m
 Height Difference (HD): 73m
 Total Climb (TC): 328m
 Maximum Climb (MC): 42m
 Climb per Km: 34.7m/km

Competition Committee:

Technical Delegate:
 Chief of Competition: John Estle
 Ass't Chief of Competition: Greg Whisenant
 Chief of Secretariat: Rikke Mery
 Chief of Course: Russ Lizotte
 Assistant Chief of Course: Tom Helmers
 Chief of Stadium: Susan Faulkner
 Chief of Timing: Terry Schmidt
 Chief of Competition Control: John Carlson

Please Note:
 At the completion of the first lap, follow the blue course to the top of the Ramp, then turn down the Ramp. The second lap does not utilize the first 1.5km of the first lap.