



Chest Medicine Fairbanks Distance Series #1

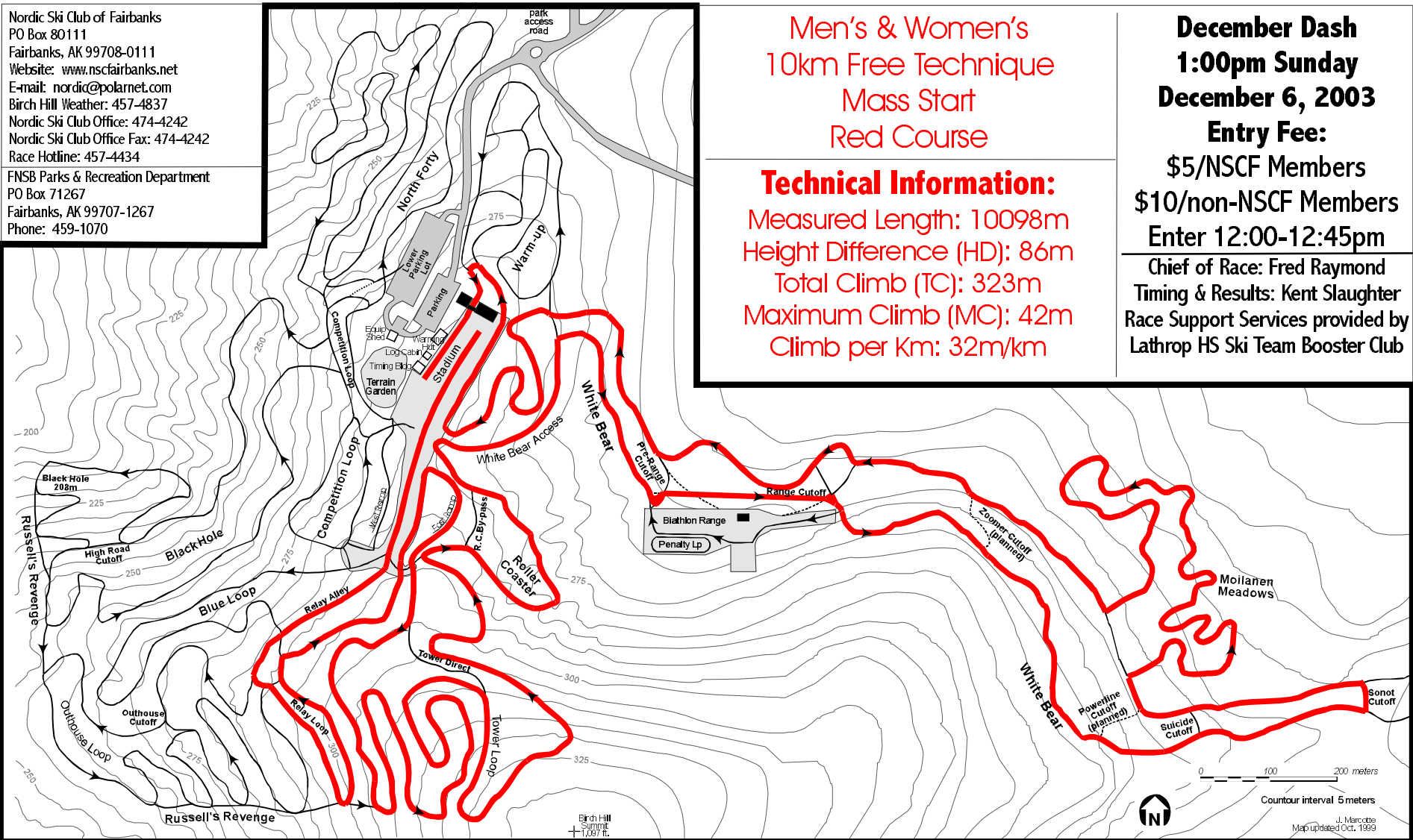
Prizes provided by Raven Cross Country

Organized by Nordic Ski Club of Fairbanks

Jim Whisenant Cross Country Ski Trails at Birch Hill Park Recreation Area



Nordic Ski Club of Fairbanks
 PO Box 80111
 Fairbanks, AK 99708-0111
 Website: www.nsfairbanks.net
 E-mail: nordic@polarnet.com
 Birch Hill Weather: 457-4837
 Nordic Ski Club Office: 474-4242
 Nordic Ski Club Office Fax: 474-4242
 Race Hotline: 457-4434
 FNSB Parks & Recreation Department
 PO Box 71267
 Fairbanks, AK 99707-1267
 Phone: 459-1070



Men's & Women's
 10km Free Technique
 Mass Start
 Red Course

Technical Information:

Measured Length: 10098m
 Height Difference (HD): 86m
 Total Climb (TC): 323m
 Maximum Climb (MC): 42m
 Climb per Km: 32m/km

December Dash
1:00pm Sunday
December 6, 2003
Entry Fee:
 \$5/NSCF Members
 \$10/non-NSCF Members
 Enter 12:00-12:45pm
 Chief of Race: Fred Raymond
 Timing & Results: Kent Slaughter
 Race Support Services provided by
 Lathrop HS Ski Team Booster Club