

Nordic Ski Club of Fairbanks
PO Box 80111
Fairbanks, AK 99708
 NSCF Office: 907-474-4242
 NSCF Office Fax: 907-474-4242
 Birch Hill Weather: 907-457-4837
 Race Hotline: 907-457-4434
 Junior Nordic Hotline: 907-457-4437
 e-mail: nordic@ptialaska.net
 web: www.nscfairbanks.net

**NORDIC
 SKI CLUB**



FAIRBANKS

Williams Alaska

Town Series #4

Auto Service Co. SUBARU Trophy

Organized by **Nordic Ski Club Fairbanks**

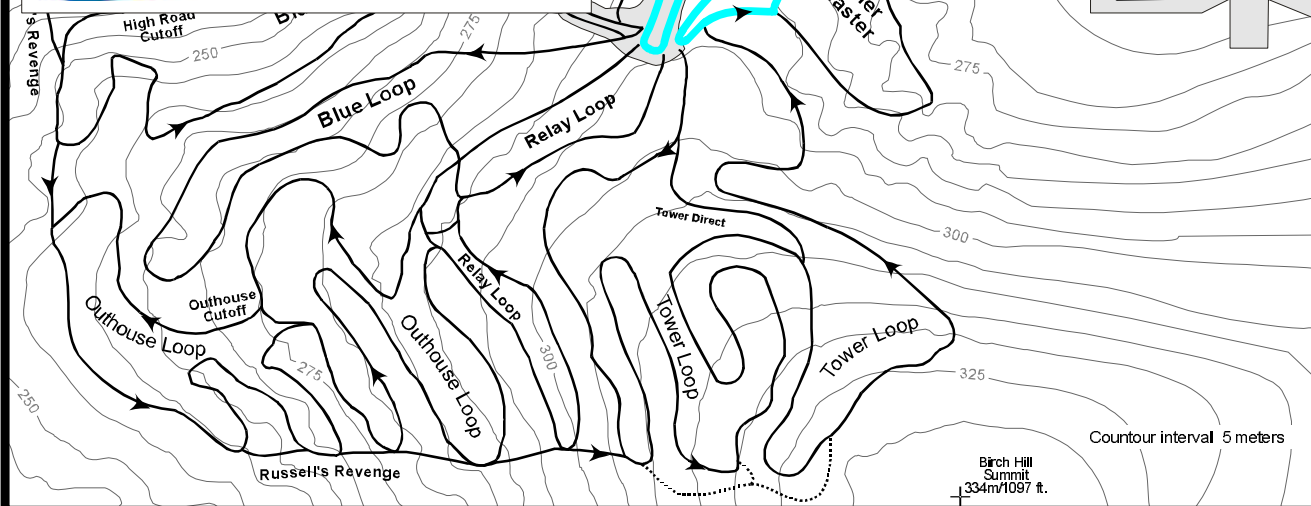
Saturday, January 31, 2004

Jim Whisenant Ski Trails

Birch Hill Park Rec. Area, Fairbanks, Alaska



The Beauty of All-Wheel Drive.



Junior High Boys & Girls
2.5km Classic Technique
Mass-Start
Blue Course

Technical Information:

Measured Length: 2685m
 Height Difference (HD): 31m
 Total Climb (TC): 65m
 Maximum Climb (MC): 21m
 Climb per Km: 24.0m/km

Competition Committee:

Chief of Competition: John Estle
 Asst Chief of Competition: Greg Whisenant
 Chief of Course: Russ Lizotte
 Asst. Chief of Course: Tom Helmers
 Chief of Stadium: Susan Faulkner
 Chief of Timing: Terry Schmidt
 Chief of Competition Control: John Carlson