

Nordic Ski Club of Fairbanks
PO Box 80111

Fairbanks, AK 99708

NSCF Office: 907-474-4242

NSCF Office Fax: 907-474-4242

Birch Hill Weather: 907-457-4837

Race Hotline: 907-457-4434

Junior Nordic Hotline: 907-457-4437

e-mail: nordic@ptialaska.net

web: www.nscfairbanks.net

**NORDIC
SKI CLUB**



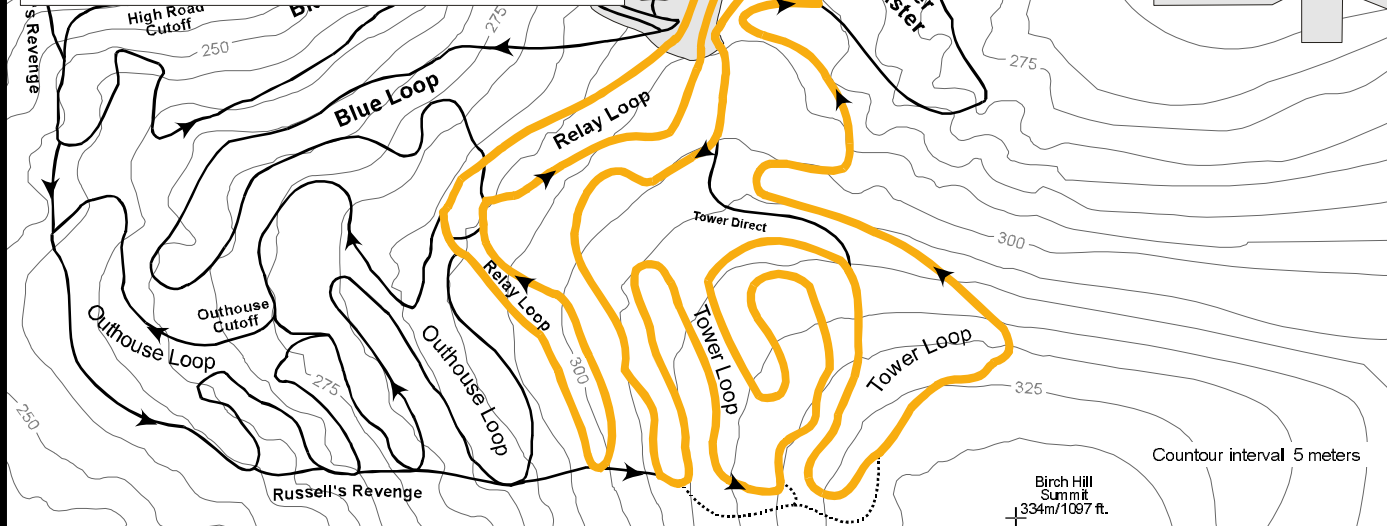
FAIRBANKS

SUBARU



The Beauty of All-Wheel Drive.

Williams



Williams Alaska

Town Series #4

Auto Service Co. SUBARU Trophy

Organized by **Nordic Ski Club Fairbanks**

Saturday, January 31, 2004

Jim Whisenant Ski Trails

Birch Hill Park Rec. Area, Fairbanks, Alaska

HS & Adult Men
7.5km Classic Technique
Mass-Start
Gold Course

Technical Information:

Measured Length: 7434m

Height Difference (HD): 73m

Total Climb (TC): 212m

Maximum Climb (MC): 29m

Climb per Km: 26.7m/km

Competition Committee:

Chief of Competition: John Estle

Ass't Chief of Competition: Greg Whisenant

Chief of Course: Russ Lizotte

Asst. Chief of Course: Tom Helmers

Chief of Stadium: Susan Faulkner

Chief of Timing: Terry Schmidt

Chief of Competition Control: John Carlson