



Chest Medicine Fairbanks Distance Series #2

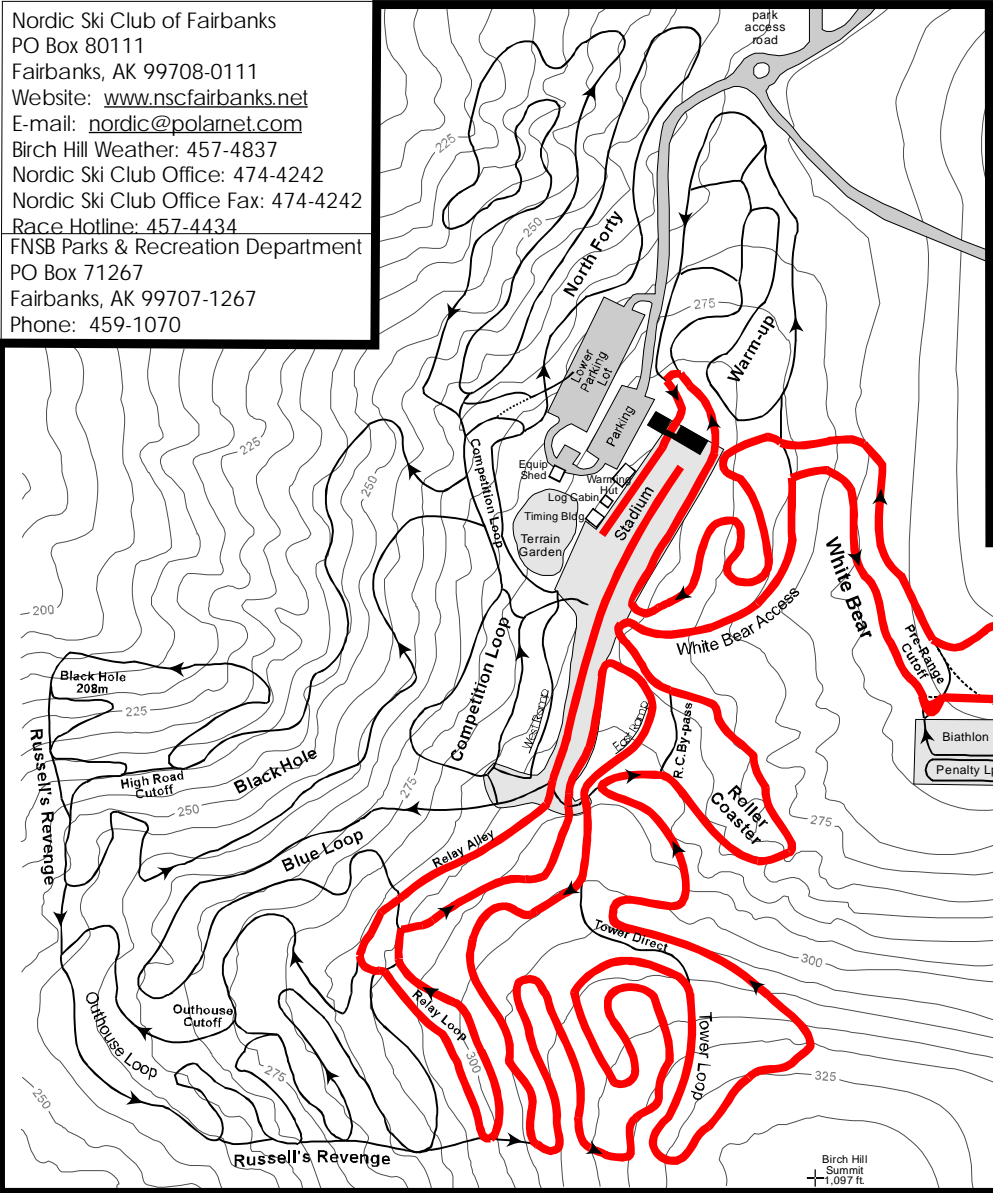
Presented by Raven Cross Country

Organized by Nordic Ski Club of Fairbanks

Jim Whisenant Cross Country Ski Trails at Birch Hill Park Recreation Area



Nordic Ski Club of Fairbanks
 PO Box 80111
 Fairbanks, AK 99708-0111
 Website: www.nscfairbanks.net
 E-mail: nordic@polamet.com
 Birch Hill Weather: 457-4837
 Nordic Ski Club Office: 474-4242
 Nordic Ski Club Office Fax: 474-4242
 Race Hotline: 457-4434
 FNSB Parks & Recreation Department
 PO Box 71267
 Fairbanks, AK 99707-1267
 Phone: 459-1070



**Men's & Women's
 10km & 20km Classic Tech.
 Mass Start - Red Course
 10Km=1 lap; 20Km=2 laps**

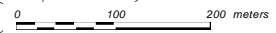
Technical Information:

10KM		20KM
10098m	Measured Length:	20196m
86m	Height Difference (HD):	86m
323m	Total Climb (TC):	646m
42m	Maximum Climb (MC):	42m
32m/km	Climb per Km:	32m/km

January Jaunt
 11:00am Sunday
 January 20, 2008
 Entry Fee:
 \$10/NSCF Members
 \$15/non-NSCF Members
 Race Day Fee - Add \$5
 Enter 10:00-10:45am

Chief of Race:
 Fred Raymond
 Race Support Services
 provided by Lathrop HS Ski
 Team Booster Club

Birch Hill Summit 1,097 ft



Countour interval 5 meters



J. Marcotte
 Map updated Oct. 1999