

Nordic Ski Club of Fairbanks
 PO Box 80111
 Fairbanks, AK 99708
 NSCF Office: 907-474-4242
 NSCF Office Fax: 907-474-2073
 Birch Hill Weather: 907-457-4837
 Race Hotline: 907-457-4434
 Jr. Nordic Hotline: 907-457-4437
 e-mail: nordic@ptialaska.net
 web: www.nscfairbanks.org

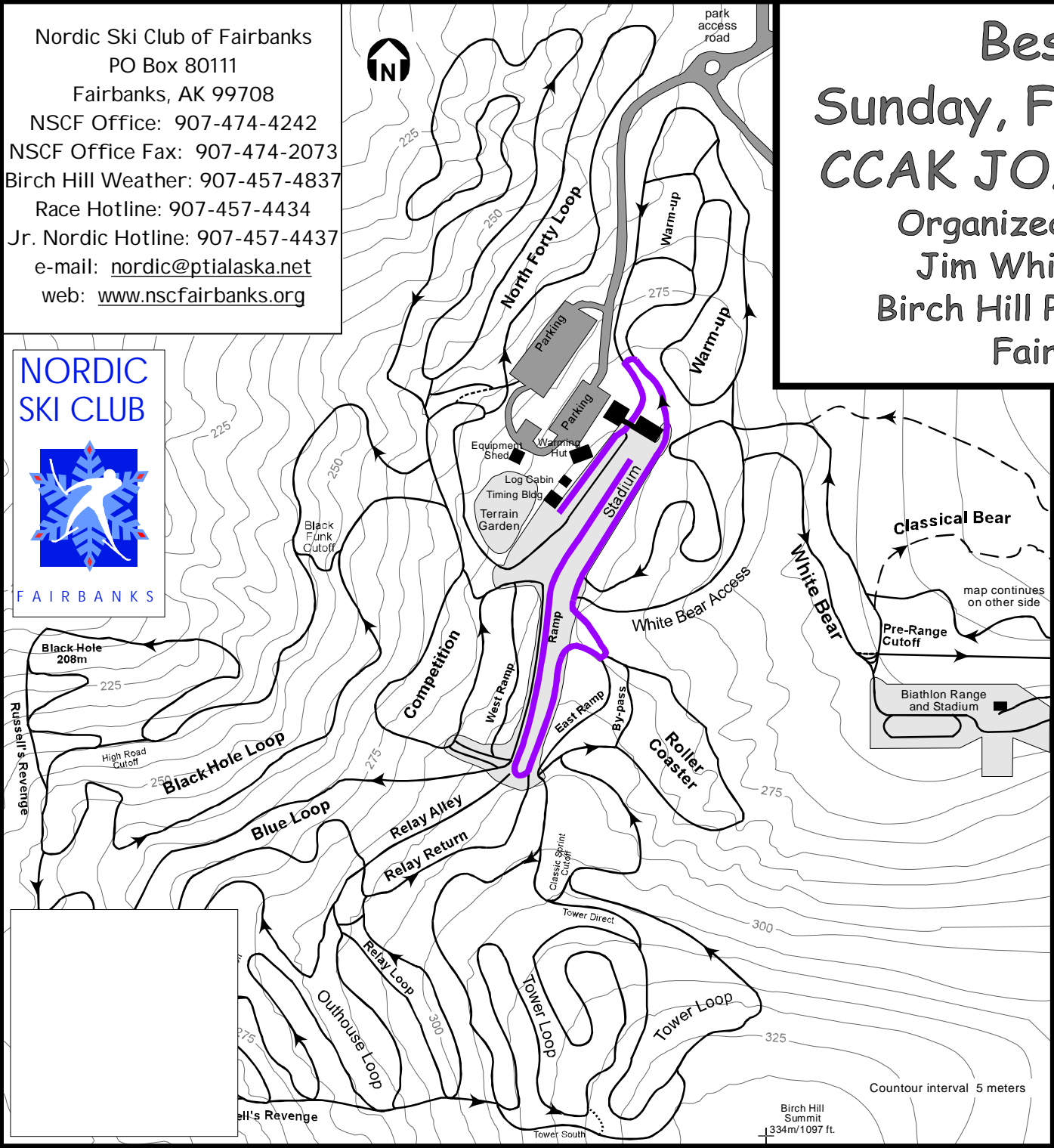


Besh Cup #6

Sunday, February 3, 2008

CCAK JO/AWG Qualifier

Organized by NSC Fairbanks
 Jim Whisenant Ski Trails
 Birch Hill Park Recreation Area
 Fairbanks, Alaska



J6 Boys and Girls 1km
 Free Technique
 Mass Start
 Violet Course

Technical Information:
 Measured Length: 1142m
 Height Difference (HD): 15m
 Total Climb (TC): 17m
 Maximum Climb (MC): 10m
 Climb per Km: 15.2m/km

Competition Committee:
 Technical Delegate:
 Chief of Competition: John Estle
 Chief of Secretariat: Rikke Mery
 Chief of Course: Russ Lizotte
 Assistant Chief of Course: Tom Helmers
 Chief of Stadium: Susan Faulkner
 Stadium Ass'ts: Bob Wilkinson, Dave Murray
 Chief of Timing:
 Chief of Competition Control: John Carlson
 Chief of Athlete Care: