



Chest Medicine Fairbanks Distance Series #1

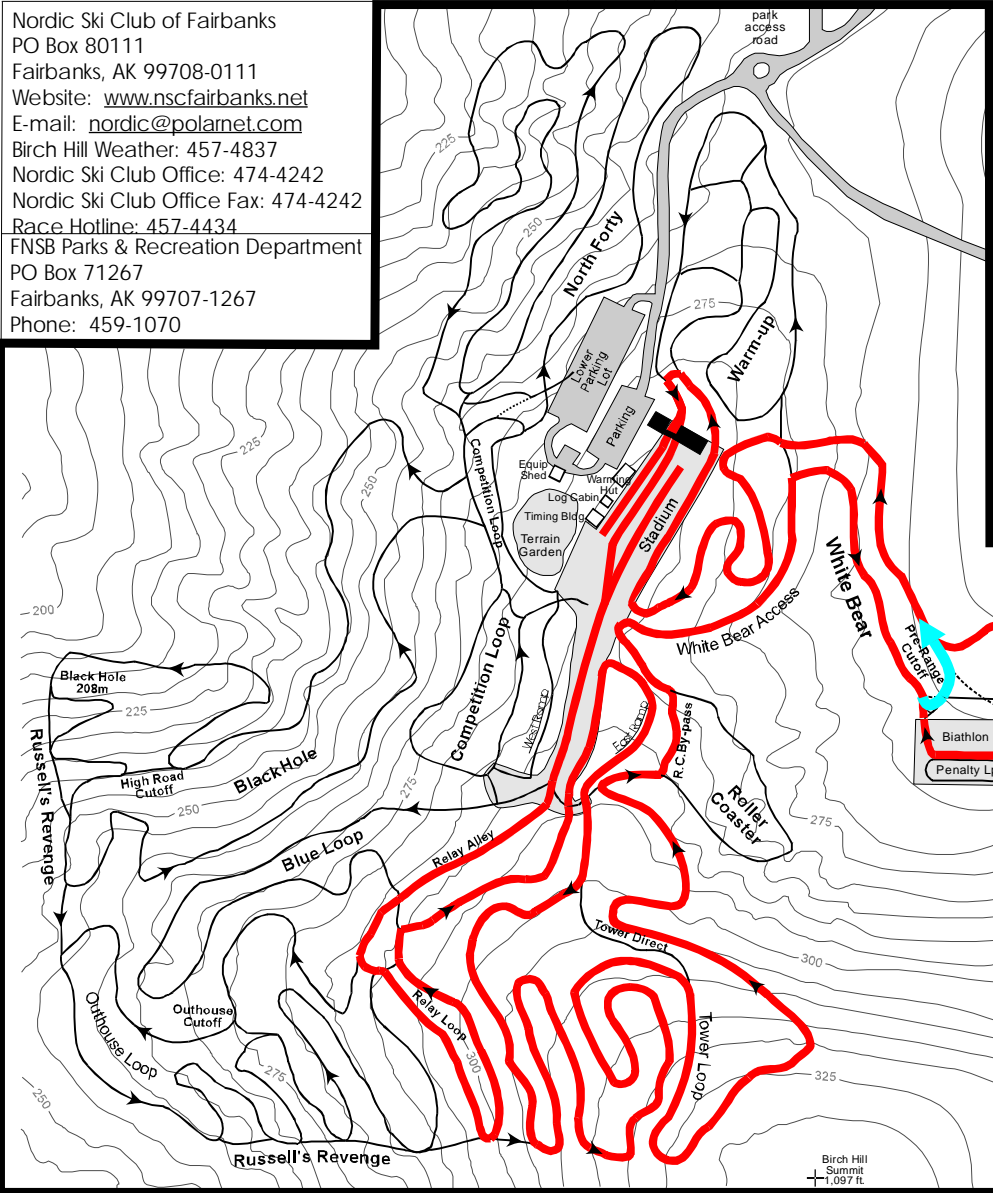
Prizes provided by Raven Cross Country

Organized by Nordic Ski Club of Fairbanks

Jim Whisenant Cross Country Ski Trails at Birch Hill Park Recreation Area



Nordic Ski Club of Fairbanks
 PO Box 80111
 Fairbanks, AK 99708-0111
 Website: www.nscfairbanks.net
 E-mail: nordic@polamet.com
 Birch Hill Weather: 457-4837
 Nordic Ski Club Office: 474-4242
 Nordic Ski Club Office Fax: 474-4242
 Race Hotline: 457-4434
 FNSB Parks & Recreation Department
 PO Box 71267
 Fairbanks, AK 99707-1267
 Phone: 459-1070

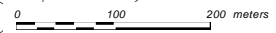


Men's & Women's
 7.5km & 15km
 Free Technique - Mass Start
 15km = Red Course
 7.5km = Blue Cutoff

Technical Information:
 GPS distance = 15.72Km
 Total Climb = 400m

Gundeloppet
 11:00am Sunday
 December 14, 2008
 Entry Fee:
 \$10/NSCF Members
 \$15/non-NSCF Members
 Race Day Fee - Add \$5
 Enter 10:00-10:45am
 Chief of Race: Fred Raymond
 Timing/Results: John Estle
 Race Support Services provided
 by Lathrop HS Ski Team Booster
 Club

Course covers
 the entire
 White Bear loop



Countour interval 5 meters



J. Marcotte
 Map updated Oct. 1999