

Nordic Ski Club of Fairbanks
 PO Box 80111
 Fairbanks, AK 99708
 NSCF Office: 907-474-4242
 NSCF Office Fax: 907-474-2073
 Birch Hill Weather: 907-457-4837
 Race Hotline: 907-457-4434
 e-mail: racing@nscfairbanks.org
 web: www.nscfairbanks.org

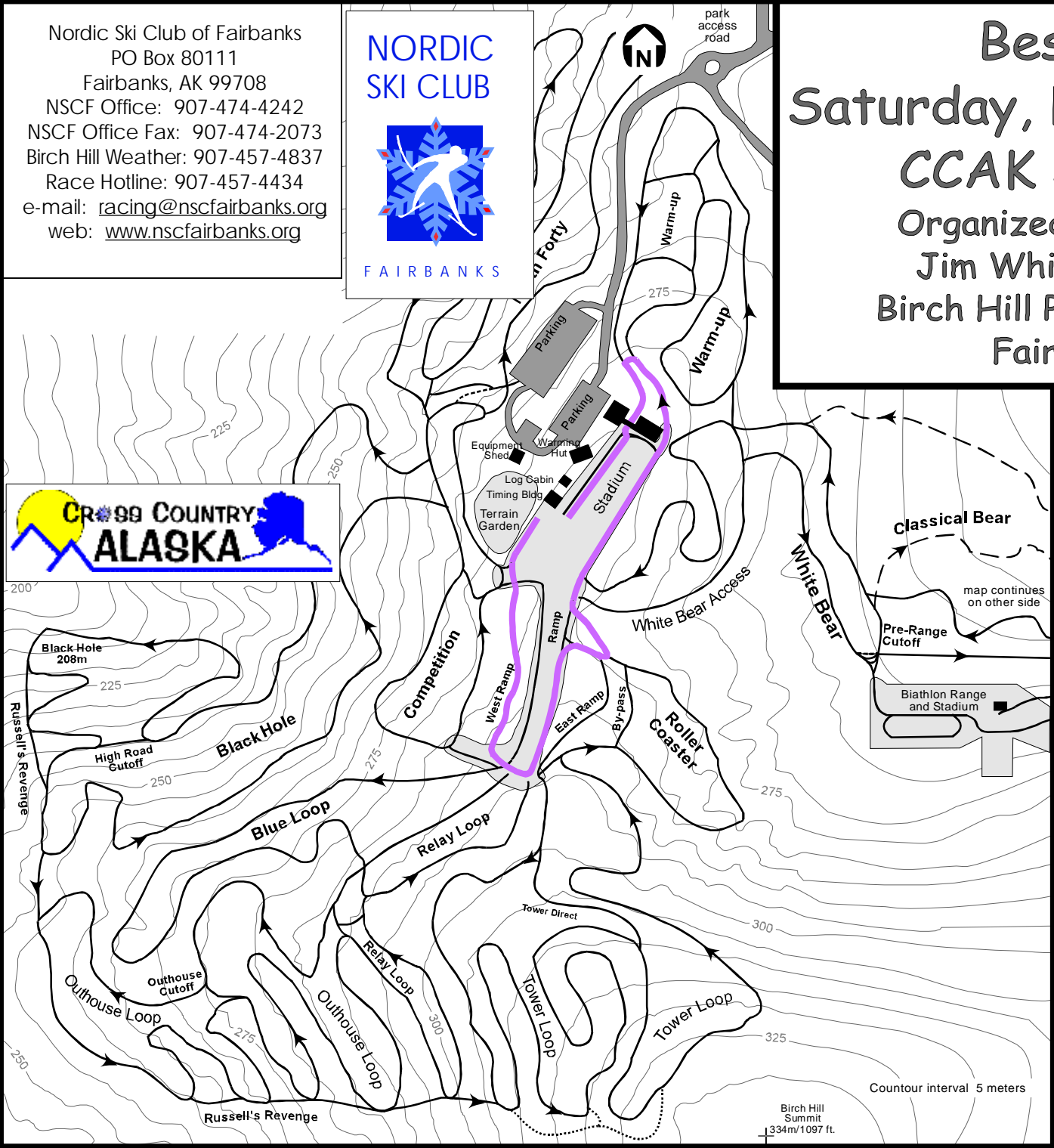
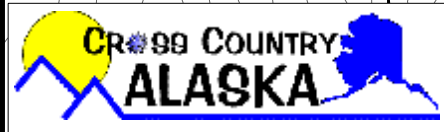


Besh Cup #5

Saturday, February 7, 2009

CCAK JO Qualifier

Organized by NSC Fairbanks
 Jim Whisenant Ski Trails
 Birch Hill Park Recreation Area
 Fairbanks, Alaska



J5 & J6 Boys & Girls
 1km Classic Technique
 Interval Start
 Purple Course

Technical Information:
 Measured Length: 1054m
 Height Difference (HD): 14m
 Total Climb (TC): 18m
 Maximum Climb (MC): 9m
 Climb per Km: 17.4m/km

Competition Committee:

- Technical Delegate: Lin Hinderman
- Chief of Competition: John Estle
- Chief of Secretariat: tba
- Chief of Course: Andy Blossy
- Assistant Chief of Course: Tim Buckley
- Chiefs of Stadium: Bob Wilkinson,
 Dave Murray, Susan Faulkner
- Chief of Timing: Carol Haas
- Chief of Competition Control: Byron & Chris Broda
- Chief of Athlete Care: tba