

Nordic Ski Club of Fairbanks  
 PO Box 80111  
 Fairbanks, AK 99708  
 NSCF Office: 907-474-4242  
 NSCF Office Fax: 907-474-2073  
 Birch Hill Weather: 907-457-4837  
 Race Hotline: 907-457-4434  
 Jr. Nordic Hotline: 907-457-4437  
 e-mail: [nordic@ptialaska.net](mailto:nordic@ptialaska.net)  
 web: [www.nscfairbanks.org](http://www.nscfairbanks.org)

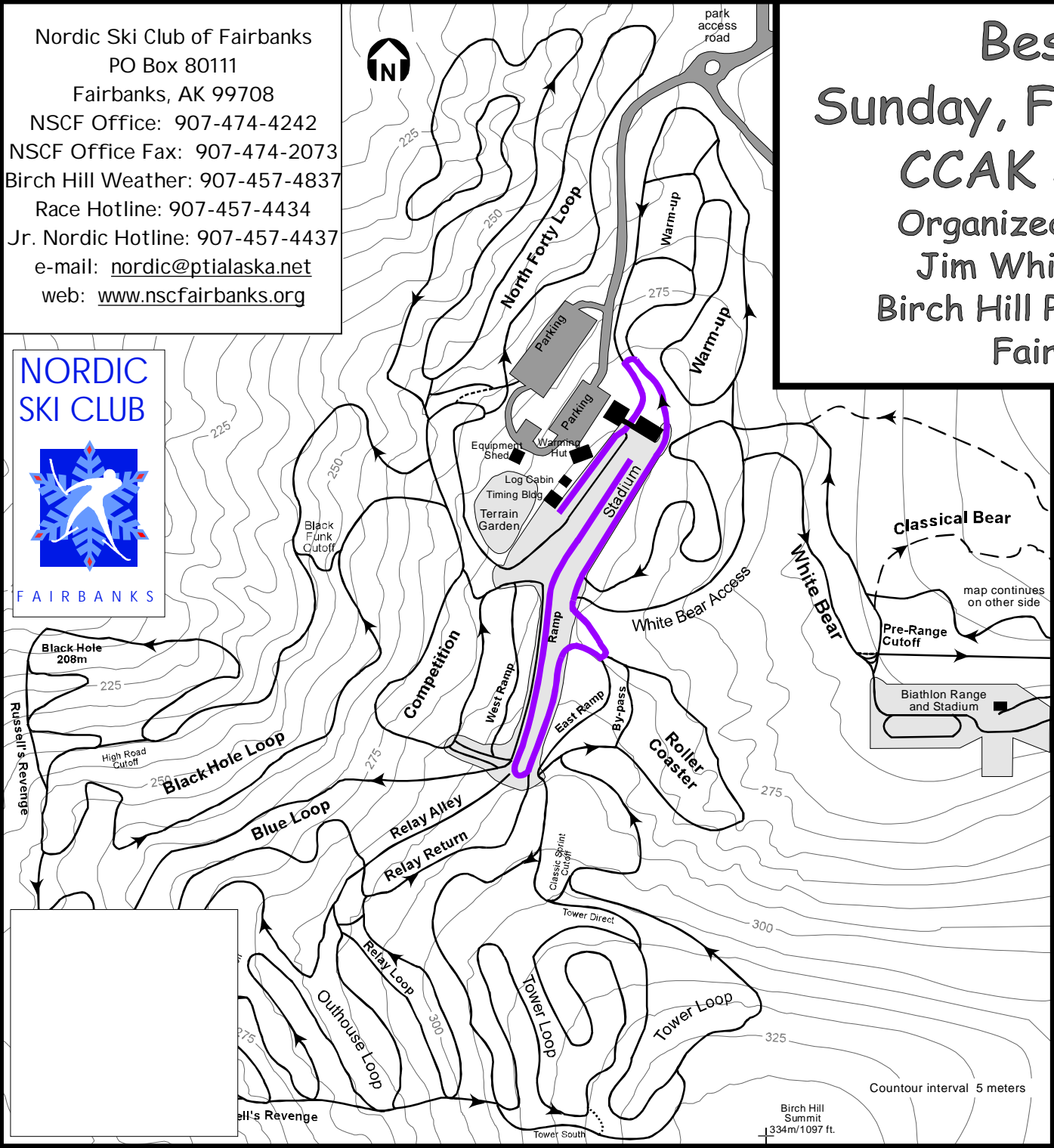


# Besh Cup #6

## Sunday, February 8, 2009

### CCAK JO Qualifier

Organized by NSC Fairbanks  
 Jim Whisenant Ski Trails  
 Birch Hill Park Recreation Area  
 Fairbanks, Alaska



**J6 Boys and Girls 1km  
 Free Technique  
 Mass Start  
 Violet Course**

**Technical Information:**  
 Measured Length: 1142m  
 Height Difference (HD): 15m  
 Total Climb (TC): 17m  
 Maximum Climb (MC): 10m  
 Climb per Km: 15.2m/km

**Competition Committee:**  
 Technical Delegate: Lin Hinderman  
 Chief of Competition: John Estle  
 Chief of Secretariat: tba  
 Chief of Course: Andy Blossy  
 Assistant Chief of Course: Tim Buckley  
 Chiefs of Stadium: Bob Wilkinson,  
 Dave Murray, Susan Faulkner  
 Chief of Timing: Carol Haas  
 Chief of Competition Control: Byron & Chris Broda  
 Chief of Athlete Care: tba