



Chest Medicine Fairbanks Distance Series #3

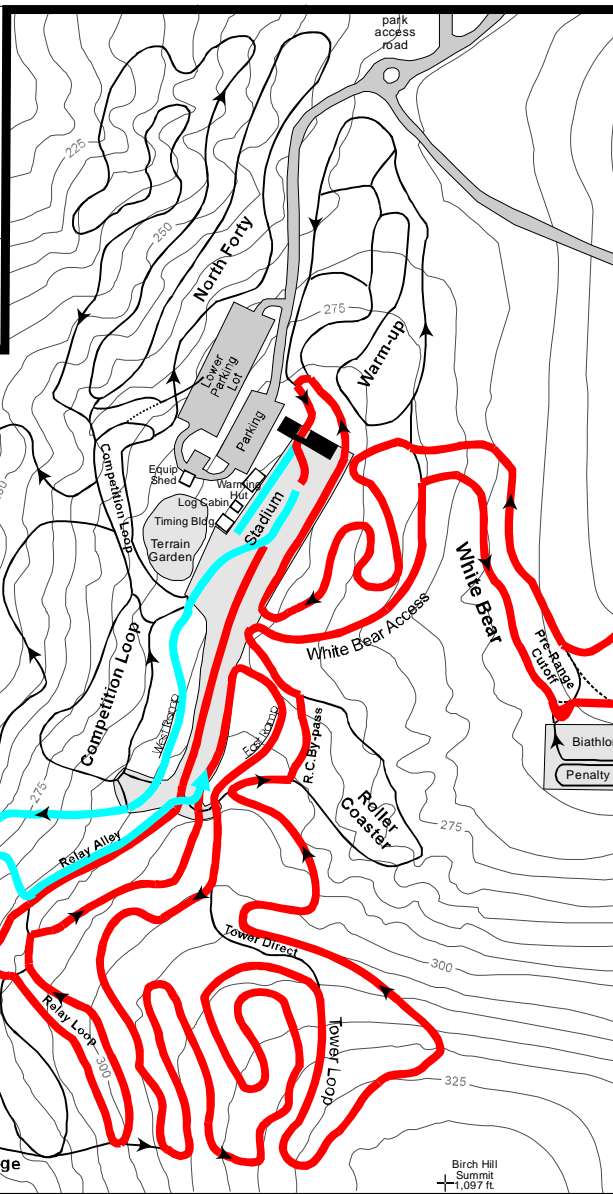
Presented by Raven Cross Country

Organized by Nordic Ski Club of Fairbanks

Jim Whisenant Cross Country Ski Trails at Birch Hill Park Recreation Area



Nordic Ski Club of Fairbanks
 PO Box 80111
 Fairbanks, AK 99708-0111
 Website: www.nscfairbanks.net
 E-mail: nordic@polamet.com
 Birch Hill Weather: 457-4837
 Nordic Ski Club Office: 474-4242
 Nordic Ski Club Office Fax: 474-4242
 Race Hotline: 457-4434
 FNSB Parks & Recreation Department
 PO Box 71267
 Fairbanks, AK 99707-1267
 Phone: 459-1070



Men's & Women's
15km Classic (*one lap*)
And
15CI+ 15Fr Skiathlon
 15km CI = Red Course
 15km Fr = Blue, then follow Red

Technical Information:
 Exact Technical Information
 Unavailable

February Frolic
 11:00am Sunday
 February 21, 2010
 Entry Fee:
 \$10/NSCF Members
 \$15/non-NSCF Members
 Race Day Fee - Add \$5
 Enter 10:00-10:45am

Chief of Race:
 Fred Raymond
 Race Support Services
 provided by Lathrop HS Ski
 Team Booster Club